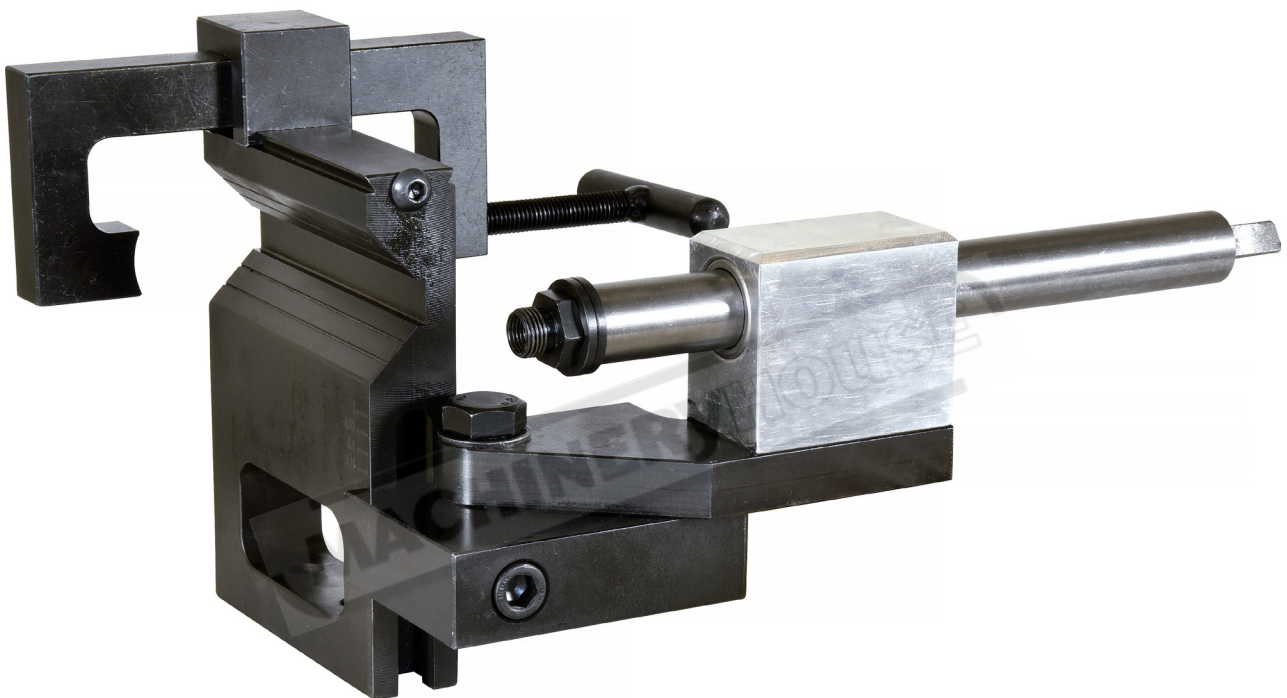


OPERATION MANUAL



OFFSET TUBE NOTCHER(STEEL)

Model. PNP-3/4-3"

Order Code P092

EDITION No : PNP-3/4-3"-1

DATE OF ISSUE : 03/2023

SPECIFICATION

Order Code	P092
MODEL	PNP-3/4-3"
Machine (Type)	Hand Drill Tube Notcher
Notching Cutter (Type)	Hole Saw (Optional)
Tube Capacity (OD) - Mild Steel (mm)	Ø20~ Ø75mm
Angle Adjustment (degree)	0 ~ 50
Minimum Hand Drill Chuck Size (mm)	12mm
Hole Saw Mounting Thread (Inch)	1/2" x 20tpi, 5/8" x 18tpi
Dimensions (L x W x H) (mm)	280 x 180 x 100
Nett Weight (kg)	10

SAVE THIS MANUAL

You will need this manual for the safety warnings and precautions, assembly instructions, operating and maintenance procedures, parts list and diagram. Keep your invoice with this manual. Write the invoice number on the inside of the front cover. Keep the manual and invoice in a safe and dry place for future reference.

IDENTIFICATIONS

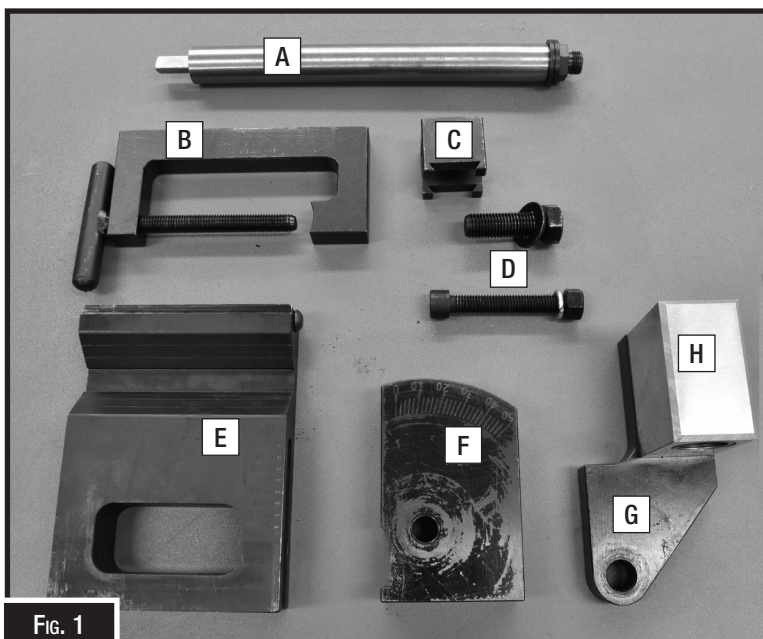


Fig. 1

A	Arbor Shaft
B	Tube Clamp
C	Tube Clamp Slider
D	Bolts
E	Main Frame
F	Base
G	Swivel Plate
H	Bearing Block

SAFETY WARNINGS AND PRECAUTIONS

1. **Keep the work area clean.** Remove any slip or trip items in the work area.
2. **Observe work area conditions.** Do not use machines or power tools in damp or wet locations. Don't expose to rain. Keep work area well lite. Do not use electric powered tools in the presence of flammable gases or liquids.
3. **Keep children away.** Children must never be allowed in the work area. Do not let them handle the machines, tools, or extension cords.
4. **Store idle equipment.** When not in use, tools must be stored in a dry location and coated with light oil to prevent rust. Always lock up tools and keep them out of reach of children.
5. **Do not force the tool.** It will do the job better and more safely at the rate for which it was intended. Do not use inappropriate attachments in an attempt to exceed the tool capacity.
6. **Use the right tool for the job.** Do not attempt to force a small tool or attachment to do the work of a larger industrial tool. Do not modify this tool and do not use this tool for a purpose for which it was not intended.
7. **Dress properly.** Do not wear loose clothing or jewelry as they can be caught in moving parts. Protective, non-conductive clothes and non-skid footwear are recommended when working. Wear restrictive hair covering to contain long hair.
8. **Use eye and ear protection.** Always wear ANSI approved impact safety goggles. Wear a full face shield if you are producing metal filings or wood chips. Wear an ANSI approved dust mask or respirator when working around metal, wood, and chemical dusts and mists.
9. **Do not overreach.** Keep proper footing and balance at all times. Do not reach over or across running machines. Keep hands and fingers clear of moving parts when operating.
10. **Maintain tools with care.** Keep tools sharp and clean for better and safer performance. Follow instructions for lubricating and changing accessories. Inspect tool cords periodically and, if damaged, have them repaired by an authorized technician. Handles must be kept clean, dry, and free from oil and grease at all times.
11. **Remove adjusting keys and wrenches.** Check that keys and adjusting wrenches are removed from the tool or machine work surface before plugging it in.
12. **Stay alert.** Watch what you are doing, use common sense. Do not operate any tool when you are tired.
13. **Check for damaged parts.** Before using any tool, any part that appears damaged should be carefully checked to determine that it will operate properly and perform its intended function. Check for alignment and binding of moving parts; any broken parts or mounting fixtures; and any other condition that may affect proper operation. Any part that is damaged should be properly repaired or replaced by a qualified technician. Do not use the tool if any switch does not turn on and off properly.
14. **Do not operate tool** if under the influence of alcohol or drugs. Read warning labels if taking prescription medicine to determine if your judgment or reflexes are impaired while taking drugs. If there is any doubt, do not operate the tool.
15. **Maintenance.** For your safety, service and maintenance should be performed regularly by a qualified technician.
16. **Workpiece may be sharp.** After bending or cutting workpieces use caution. Be aware of sharp edges or sharp shreds of metal that may be created. Use heavy duty gloves when handling the workpiece.

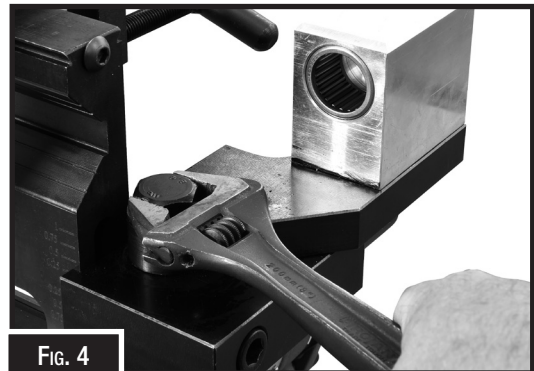
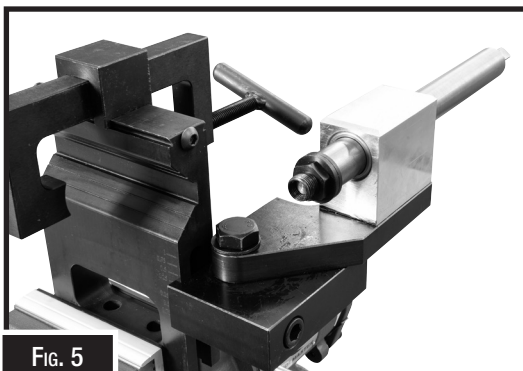
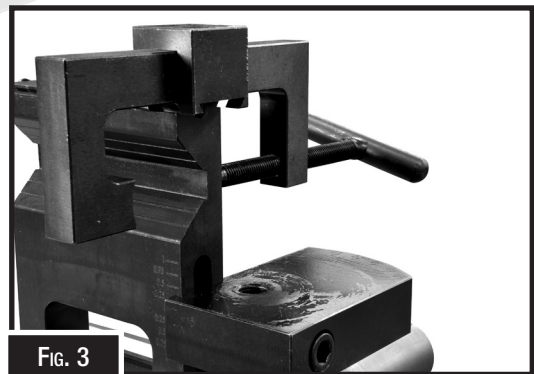
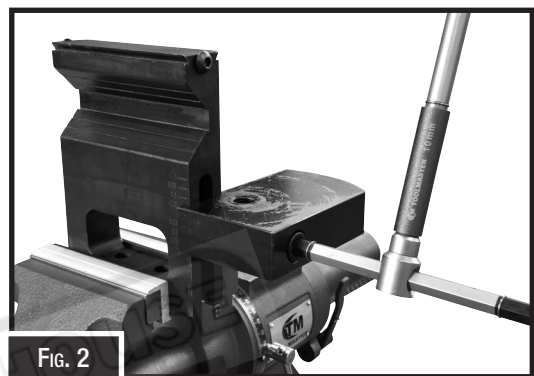
UNPACKING

This tool was carefully packaged for safe transport. When unpacking, separate all enclosed items from the packaging materials and inspect them for shipping damage. If items are damaged, please contact your distributor.

NOTE: Save all the packaging materials until you are completely satisfied with the machine and have resolved any issues with the distributor, or the shipping agent.

ASSEMBLY

1. Clamp the main frame in a vice to secure it while the notcher is being assembled. (Fig. 2)
2. With the degree scale facing up, attach the base onto the side of the main frame using the M12 x 80 bolt supplied. (Fig. 2)
3. Place the tube clamp slider over the tube clamp and slide this assembly on to the dovetail slide on the main frame from the bearing block end and retain with the button head screw. The T-Handle can be adjusted to clamp the material into the V of the main frame (Fig. 3).
4. Onto the base attach the swivel plate using the M12 x 60 Bolt and Flat washer supplied. (Fig. 4)
5. Smear the roller bearing in the bearing block with a light grease, then place the un-threaded end of the arbor shaft into the bearing block and insure that it moves freely. (Fig. 5)

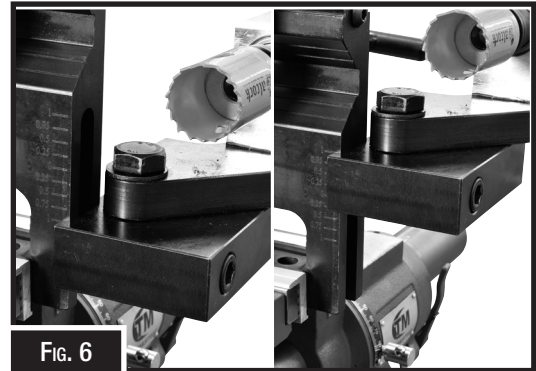


OPERATION

The instructions in this section are written with the understanding that the operator has the knowledge and skills to operate this tool. If you have difficulties performing any operation, stop using the tool and seek advice.

Note: Always ensure that the notcher is securely held in a bench vice or attached to a bench using the bolt holes provided in the base of the main frame.

1. Set the Offset of the cutter to the required position by using the scale on the main frame. (Fig. 6)
2. Set the angle of the notch to be cut in the tubing, by loosening the centre lock bolt slightly and adjust the Arbor Carrier to the desired angle using the gauge, then tighten the lock bolt securely. (Fig. 7)
3. Place the tubing into the "V" notch and secure with the Tubing Clamp.
4. Fit the holesaw to the arbor shaft using the 1/2" threaded mount or the 5/8" adapter. (Fig. 7)
5. Mount the hand drill to the end of the arbor shaft and set the speed to approximately 500rpm for steel tube. (Fig. 8)



Note The threaded end of the Arbor Shaft has 1/2" thread. This is to accommodate smaller sized hole saws with 1/2" Dia. mount holes. For larger (up to 3") hole saws an adapter with 5/8" Dia. mounting holes are also supplied. If the 5/8" adapter is to be used, be sure that it is securely tightened.



MAINTENANCE

1. Please observe good shop practices for your safety and to extend the work life of your tools.
2. Periodically brush away cuttings and debris from the Tube Notcher, especially the bearing and spindle area to avoid scoring or binding these components.
3. Use a suitable light grease on the bearing to prevent overheating and wear.
4. Be sure to carefully align the drill spindle and the Tube Notcher spindle to prevent binding.
5. After use, clean the Tube Notcher, and apply a light lubrication to all moving parts and unpainted metal to prevent rust.
6. Store the Tube Notcher, well covered and in a dry, dust free place.
7. Help avoid injury by preventing access to this tool by unauthorized persons and children.

SPARE PARTS SECTION

OFFSET TUBE NOTCHER(STEEL)

Model. PNP-3/4-3"

Order Code P092

EDITION No : PNP-3/4-3"-1
DATE OF ISSUE : 03/2023

The following section covers the spare parts diagrams and lists that were current at the time this manual was originally printed. Due to continuous improvements of the machine, changes may be made at any time without notification.

HOW TO ORDER SPARE PARTS

1. Have your machines **model number, serial number & date of manufacture** on hand, these can be found on the specification plate mounted on the machine
2. A scanned copy of your parts list/diagram with required spare part/s identified.

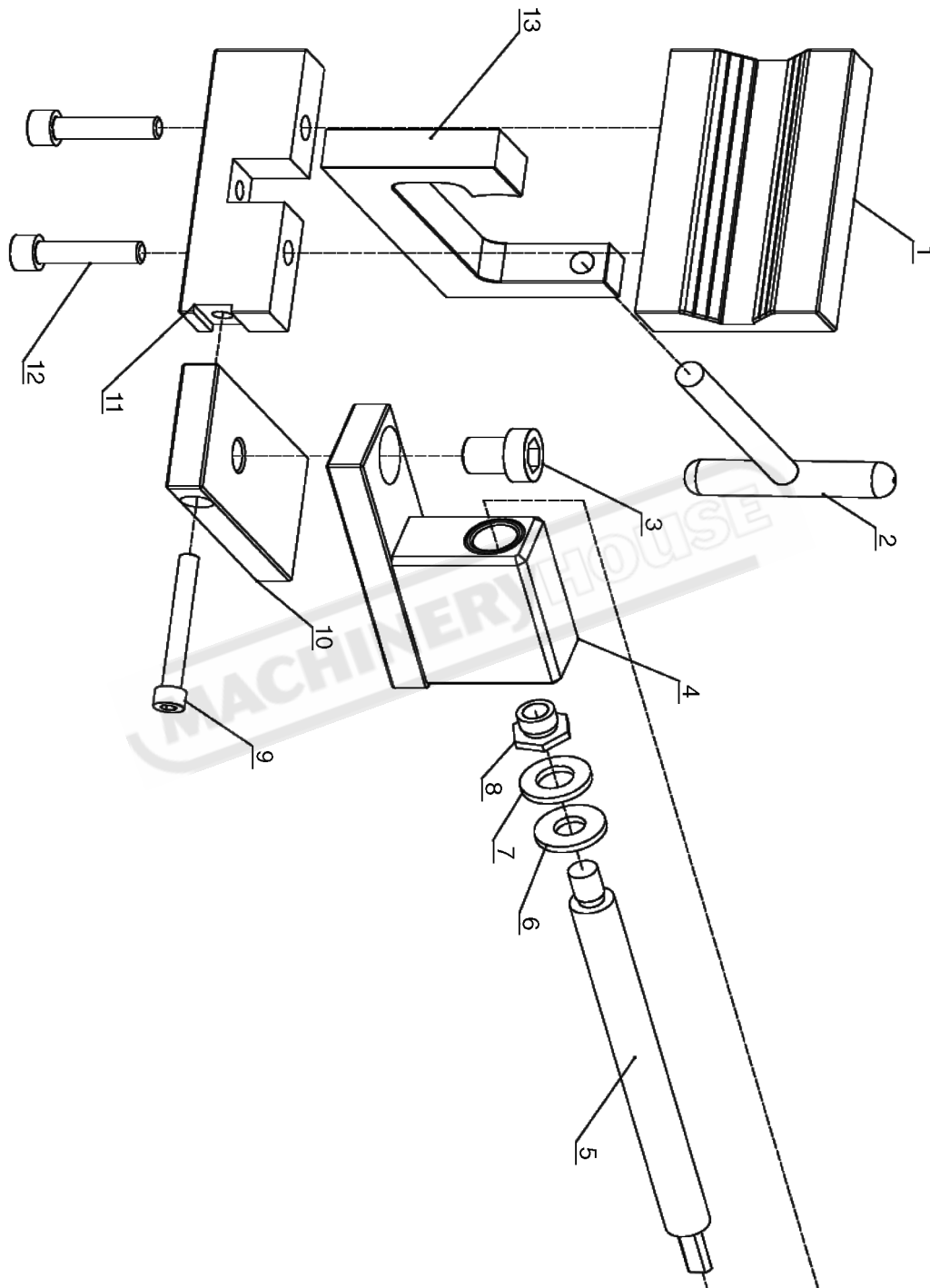
NOTE: SOME PARTS MAY ONLY BE AVAILABLE AS AN ASSEMBLY

3. Go to www.machineryhouse.com.au/contactus and fill out the inquiry form attaching a copy of scanned parts list.

Please read the following carefully

The manufacturer and distributor have provided the parts diagram in this manual as a reference tool only. The manufacturer and distributor expressly state that all repairs and parts replacement must be undertaken by a qualified service technician and not by the buyer. The buyer assumes all risk and liability arising from repairs and parts carried out by the buyer. The manufacturer or the distributor reserve the right to void warranty of the product if non standard parts have been used or repairs carried out incorrectly.

SPARE PARTS DIAGRAM



WARNING

General Machinery Safety Instructions

Machinery House
requires you to read this entire Manual before using this machine.

- 1. Read the entire Manual before starting machinery.** Machinery may cause serious injury if not correctly used.
- 2. Always use correct hearing protection when operating machinery.** Machinery noise may cause permanent hearing damage.
- 3. Machinery must never be used when tired, or under the influence of drugs or alcohol.** When running machinery you must be alert at all times.
- 4. Wear correct Clothing.** At all times remove all loose clothing, necklaces, rings, jewelry, etc. Long hair must be contained in a hair net. Non-slip protective footwear must be worn.
- 5. Always wear correct respirators around fumes or dust when operating machinery.** Machinery fumes & dust can cause serious respiratory illness. Dust extractors must be used where applicable.
- 6. Always wear correct safety glasses.** When machining you must use the correct eye protection to prevent injuring your eyes.
- 7. Keep work clean and make sure you have good lighting.** Cluttered and dark shadows may cause accidents.
- 8. Personnel must be properly trained or well supervised when operating machinery.** Make sure you have clear and safe understanding of the machine you are operating.
- 9. Keep children and visitors away.** Make sure children and visitors are at a safe distance for you work area.
- 10. Keep your workshop childproof.** Use padlocks, Turn off master power switches and remove start switch keys.
- 11. Never leave machine unattended.** Turn power off and wait till machine has come to a complete stop before leaving the machine unattended.
- 12. Make a safe working environment.** Do not use machine in a damp, wet area, or where flammable or noxious fumes may exist.
- 13. Disconnect main power before service machine.** Make sure power switch is in the off position before re-connecting.
- 14. Use correct amperage extension cords.** Undersized extension cords overheat and lose power. Replace extension cords if they become damaged.
- 15. Keep machine well maintained.** Keep blades sharp and clean for best and safest performance. Follow instructions when lubricating and changing accessories.
- 16. Keep machine well guarded.** Make sure guards on machine are in place and are all working correctly.
- 17. Do not overreach.** Keep proper footing and balance at all times.
- 18. Secure workpiece.** Use clamps or a vice to hold the workpiece where practical. Keeping the workpiece secure will free up your hand to operate the machine and will protect hand from injury.
- 19. Check machine over before operating.** Check machine for damaged parts, loose bolts, Keys and wrenches left on machine and any other conditions that may effect the machines operation. Repair and replace damaged parts.
- 20. Use recommended accessories.** Refer to instruction manual or ask correct service officer when using accessories. The use of improper accessories may cause the risk of injury.
- 21. Do not force machinery.** Work at the speed and capacity at which the machine or accessory was designed.
- 22. Use correct lifting practice.** Always use the correct lifting methods when using machinery. Incorrect lifting methods can cause serious injury.
- 23. Lock mobile bases.** Make sure any mobile bases are locked before using machine.
- 24. Allergic reactions.** Certain metal shavings and cutting fluids may cause an allergic reaction in people and animals, especially when cutting as the fumes can be inhaled. Make sure you know what type of metal and cutting fluid you will be exposed to and how to avoid contamination.
- 25. Call for help.** If at any time you experience difficulties, stop the machine and call you nearest branch service department for help.

WARNING

Manual Notching Machine Safety Instructions

Machinery House
requires you to read this entire Manual before using this machine.

- 1. Maintenance.** Make sure all moving parts are locked down before any inspection, adjustment or maintenance is carried out. Place a block of timber between the blades to save blades from shearing hands or fingers.
- 2. Notcher Condition.** Notcher must be maintained for a proper working condition. Never operate a Notcher that has damaged or worn parts. Scheduled routine maintenance should be performed on a scheduled basis.
- 3. Blade Condition.** Never operate a Notcher with a damaged or badly worn blades. Replace if required.
- 4. Hand Hazard.** Keep hands and fingers clear from moving parts. Serious injury can occur if hand or finger tips come between blades.
- 5. Personal Protection.** Gloves are recommended when handling the workpieces.
- 6. Authorized and trained personnel.** The machine must be operated by authorized and trained personnel. The shear is designed to be operated by a single user. Using the machine with more than one operator is forbidden, except for certain maintenance situations.
- 7. Work area hazards.** Keep the area around the Notcher clean from oil, tools, objects & chips. Pay attention to other persons in the area and know what is going on around the area to ensure unintended accidents. The working area of the machine must be properly lit up.
- 8. Guards.** Do not operate Notcher without the correct guards in place. Necessary guards protect you from injuries by the shear blades & moving parts.
- 9. Material.** Do NOT shear granular, hydrous or over-capacity sheet pieces. Also do not attempt to shear more than one workpiece one over another.
- 10. Shearing .** Do NOT operate the machine without proper blade gap adjustment according to sheet thickness. Lubricate blade edges by thin oil prior to cutting.
- 11. Operation.** During the shearing process, the workpiece may slide or move unexpectedly. Therefore, the material must be handled carefully.
- 12. Level machine.** Level the machine on a flat concrete surface by using a spirit level.
- 13. Hearing protection and hazards.** Always wear hearing protection as noise generated from machine and workpiece can cause permanent hearing loss over time.
- 14. Call for help.** If at any time you experience difficulties, stop the machine and call your nearest branch service department for help.

PLANT SAFETY PROGRAM

NEW MACHINERY HAZARD IDENTIFICATION, ASSESSMENT & CONTROL

Manual Notching Machine

Developed in Co-operation Between A.W.I.S.A and Australia Chamber of Manufactures
 This program is based upon the Safe Work Australia, Code of Practice - Managing Risks of Plant in the Workplace (WHSA 2011 No10)

Item No.	Hazard Identification	Hazard Assessment	Risk Control Strategies <small>(Recommended for Purchase / Buyer / User)</small>
B	CRUSHING	LOW	Secure & support work material on table.
C	CUTTING, STABBING, PUNCTURING	MEDIUM	Wear gloves to prevent cuts from sharp material offcuts.
D	SHEARING	MEDIUM	Hands should be kept clear of blade. Ensure guards are secured properly.
F	STRIKING	MEDIUM	Ensure material hold downs are correctly adjusted. Wear safety glasses.
O	OTHER HAZARDS, NOISE.	LOW	Wear hearing protection as required.
Plant Safety Program to be read in conjunction with manufactures instructions			




www.machineryhouse.com.au



www.machineryhouse.co.nz

Authorised and signed by:
 Safety officer:


 Manager:

Revised Date: 12th March 2012